



ADDED PEACE OF MIND WHEN IT'S NEEDED THE MOST.

The death of a loved one is one of life's most stressful situations. Quick, often costly decisions must be made while emotions are at their peak. Yet, how many people know how to plan a funeral? That's why your employer offers a funeral planning and concierge service through The Hartford's **Group Life insurance program** – provided by Everest,¹ the first to offer this service nationwide.

THE RESOURCES TO HELP YOU MAKE CONFIDENT, INFORMED DECISIONS.

Everest's advisors help families understand all of their options and put them into action while staying within their budget. Here are the services they offer you, your spouse/partner and children under the age of 26.

EVEREST SERVICES

24/7 Advisor Assistance

- Round-the-clock access to Everest Advisors.
- Assistance with all funeral planning issues.

PriceFinderSM Research Reports

- The only nationwide database of funeral home prices.
- Detailed local funeral home price comparisons.
- Unlimited access to reports available on demand via the Web site.

Online Planning Tools

- Unlimited use of Everest's online planning, research, and knowledge tools.
- Create simple or detailed funeral plans using various reference materials, including 10 key decisions everyone should make.
- Information can be stored, updated, retrieved and printed on demand.

continued





CASE ILLUSTRATION: A SHOULDER TO LEAN ON.²

April had always thought that she and her husband would spend their golden years together. So when he began to lose his battle with pancreatic cancer, she was completely unprepared. However, April had a knowledgeable and trusted resource: Everest services were included as part of her insurance program.

Her Everest advisor assisted with every aspect of the funeral planning process, giving April peace of mind during this stressful time. And she received an expedited life insurance payment within a week of her husband's death, which helped ease many of the family's financial pressures. Everest's services relieved April of some of the stress that comes with loss, allowing her to focus on her family.

EVEREST SERVICES *con't*

At-Need Family Support

- Concierge services at or near the time of death provided by Everest's licensed funeral directors, who offer as much or as little assistance as the family desires.
- Communication of the plan with the funeral home of choice, removing the family from a sales-focused environment.
- Pricing information presented to the family in an easy-to-understand format.
- Negotiation of the funeral costs with the funeral home, often resulting in significant financial savings.

Express Claim Processing

- Includes Express Pay, an innovative claims payment service that can deliver benefits in as little as 48 hours.
- Allows your beneficiary to use the insurance proceeds to pay for immediate funeral expenses.

A TRUSTED ADVISOR DURING THE WORST OF TIMES.

We can't always predict, but we can prepare. Find out more about The Hartford's Funeral and Concierge Services by calling **1-866-854-5429**.

Or visit **WWW.EVERESTFUNERAL.COM/HARTFORD** and use this code: **HFEVLC**.

Prepare. Protect. Prevail.[®]

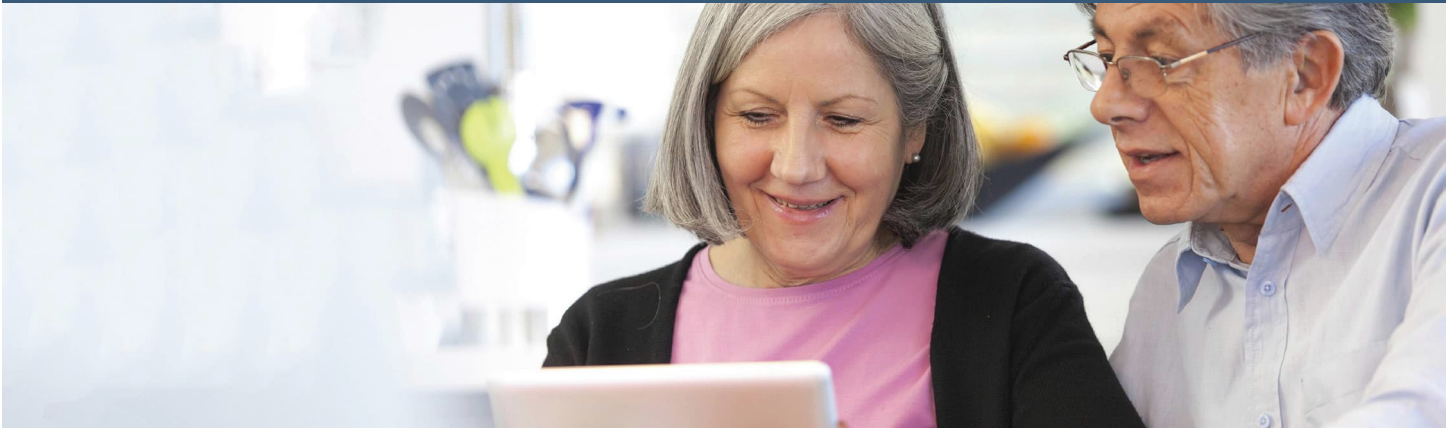
Visit us at **THEHARTFORD.COM/EMPLOYEEBENEFITS**



The Hartford[®] is The Hartford Financial Services Group, Inc. and its subsidiaries including issuing companies Hartford Life Insurance Company and Hartford Life and Accident Insurance Company. Home office is Hartford, CT.

¹ Funeral Concierge Services are offered through Everest Funeral Package, LLC (Everest). Everest and the Everest logo are service marks of Everest Funeral Package, LLC. PriceFinder is a service mark of Everest Information Services, LLC. Everest is not affiliated with The Hartford and is not a provider of insurance services. Everest and its affiliates have no affiliation with Everest ReGroup, Ltd., Everest Reinsurance Company or any of their affiliates. The Hartford is not responsible and assumes no liability for the services provided by Everest Funeral Package, LLC as described in these materials.

² This case illustration is fictitious and for illustrative purposes only.



CREATE A SIMPLE WILL FROM THE CONVENIENCE OF YOUR DESKTOP.

Whether your assets are few or many, it's important to have a will. It's the only way to ensure that your intentions will be honored in the event of your death. A will states your wishes about who will inherit your property, who will be the guardian of your children, and who will manage your estate. Without a will, those decisions may be left to others.

AN EASY AND EMPOWERING SOLUTION.

As a covered employee under a Hartford Group Life insurance policy, you have access to EstateGuidance® Will Services provided by ComPsych®.¹ It helps you create a simple, legally binding will quickly and conveniently online, saving you the time and expense of a private legal consultation. Other advantages include:

- Online assistance from licensed attorneys should you have questions.
- The ability to save drafts for up to six months. During this period, you can revise your will at no cost, as long as you haven't already printed or downloaded it.

- Additional estate planning services are also available for purchase, including the creation of living wills and trusts, guidance about divorce proceedings, and durable power of attorney.

QUICK ANSWERS TO KEY QUESTIONS.

Where there's a will, there are bound to be questions. Here are answers to four common ones.

“Isn't will preparation complicated?”

Not with EstateGuidance®. You'll be asked a series of questions online that are used to compose your will. In many states, you need only add your signature to make the will valid.

“What if I have questions as I'm creating my will?”

The online education center provides answers regarding family law. You can also access fully licensed attorneys who'll respond to you online.

“What about my privacy?”

All information is kept secure and confidential with the latest encryption technology.²

continued





CASE ILLUSTRATION: THE FINAL WORD.³

Laura was the single parent of a six-year-old daughter, Amy. She worried that if she were to die, her modest but hard-earned assets would not be available to her daughter.

The cost of a legal will seemed beyond her means until she discovered EstateGuidance® through her group life insurance provider. With it, she was able to appoint her older sister as executor of her will and name her brother and sister-in-law as Amy's legal guardians. She felt better knowing that she would have the final word in protecting her daughter's best interests.

“ So, what happens if I don't create a will?”

The state, not you, would decide how your property is distributed. In most states, all of your community and joint property would pass to your spouse if you have one. Separate property is passed according to a complex order of distribution, regardless of your loved ones' wishes. By drafting a will, you can spare them a potentially awkward and contentious situation.

GOOD INTENTIONS AREN'T ENOUGH.

You might have the best of intentions, but without a will, they aren't legally binding. Take this opportunity to put your intentions into action.

Visit

WWW.ESTATEGUIDANCE.COM/WILLS today. Use this code: **WILLHLF**. Then follow the easy steps below:

1. Access The Hartford's EstateGuidance® Will Services online.
2. Sign in to the secure site by entering the access code.
3. Follow the instructions and create your will.
4. Download the final will to your computer and print.
5. Obtain signatures and determine if your will should be notarized.

Prepare. Protect. Prevail.®

Visit us at THEHARTFORD.COM/EMPLOYEEBENEFITS

The Hartford® is The Hartford Financial Services Group, Inc. and its subsidiaries including issuing companies Hartford Life Insurance Company and Hartford Life and Accident Insurance Company. Home office is Hartford, CT.

¹ EstateGuidance® is offered through The Hartford by ComPsych™ Corporation. ComPsych is not affiliated with The Hartford and is not a provider of insurance services. The Hartford is not responsible and assumes no liability for the goods and services provided by ComPsych and reserves the right to discontinue any of these services at any time. A simple will does not cover credit shelter trust, printing or certain other features. These features are available at an additional cost to you.

² The EstateGuidance® website is secured with a GoDaddy.com Web Server Certificate. Transactions on the site are protected with up to 256-bit Secure Sockets Layer encryption.

³ This case illustration is fictitious and for illustrative purposes only.

Services may not be available in all states.

4212 06/15 Printed in the U.S.A. © 2015 The Hartford Financial Services Group, Inc. All rights reserved.



ADDITIONAL SERVICES



Cottingham & Butler Insurance Services, Inc.

If you are enrolled in insurance coverage with The Hartford, you may also be eligible to receive additional services. These services help with challenges that come before and after a claim. Be sure to read the information provided below; The Hartford wants to be there when you need us.

SERVICES AVAILABLE

COVERAGE ENROLLED IN	ADDITIONAL SERVICES AVAILABLE
Accident	Ability Assist Counseling Services Health Champion

ASKED & ANSWERED

WHAT IS ABILITY ASSIST COUNSELING SERVICES?

Ability Assist[®] Counseling Services provides access to Master's degree clinicians for 24/7 assistance if you're enrolled in coverage. This includes 3 face-to-face visits per occurrence per year for emotional concerns and unlimited phone consultations for financial, legal, and work-life concerns.

For more information on Ability Assist[®] Counseling Services:

Call 1-800-964-3577

Visit www.guidanceresources.com

Company name: **Abili** Company ID: **HLF902**

WHAT IS HEALTHCHAMPION?

HealthChampion^{SM5} offers unlimited access to benefit specialists and nurses for administrative and clinical support to address medical care and insurance claims concerns if you're enrolled in coverage. Service includes: claims and billing support, explanation of benefits, cost estimates and fee negotiation, information related to conditions and available treatments, and support to help prepare for medical visits.

For more information on HealthChampionSM Services

Call 1-800-964-3577

Visit www.guidanceresources.com

Company name: **Abili** Company ID: **HLF902**

¹AbilityAssist[®] services are offered through The Hartford by ComPsych[®]. ComPsych is not affiliated with The Hartford and is not a provider of insurance services. The Hartford is not responsible and assumes no liability for the goods and services provided by ComPsych and reserves the right to discontinue any of these services at any time. Services may not be available in all states. Visit <https://www.thehartford.com/employee-benefits/value-added-services> for more information.

⁵HealthChampionSM services are provided through The Hartford by ComPsych[®]. ComPsych is not affiliated with The Hartford and is not a provider of insurance services. The Hartford doesn't provide basic hospital, basic medical, or major medical insurance. HealthChampion specialists are only available during business hours. Inquiries outside of this timeframe can either request a call-back the next day or schedule an appointment. The Hartford is not responsible and assumes no liability for the goods and services provided by ComPsych and reserves the right to discontinue any of these services at any time. Health Champion is a service mark of ComPsych. Services may not be available in all states. Visit <https://www.thehartford.com/employee-benefits/value-added-services> for more information.

The Buck's Got Your Back[®]

The Hartford[®] is The Hartford Financial Services Group, Inc. and its subsidiaries, including underwriting company Hartford Life and Accident Insurance Company. Home Office is Hartford, CT. © 2020 The Hartford. This Benefit Highlights Sheet is an overview of the non-insurance services being offered and is provided for illustrative purposes only and is not a contract. It in no way changes or affects the services as actually provided. Only the Service Provider can fully describe all of the provisions, terms, conditions, limitations and exclusions of your non-insurance service coverage.

5962a NS 05/21



GETTING THROUGH A LOSS IS HARD. GETTING SUPPORT TO COPE IS EASY.

The loss of a loved one can leave you feeling overwhelmed. In addition to grief, you may have financial and legal worries. Questions you can't easily answer alone. And maybe some unresolved issues. If you're covered under The Hartford's **Group Life or Accident insurance policy**, you have access to Beneficiary Assist® counseling services provided by ComPsych.¹

PROFESSIONAL HELP AFTER A LOSS OR TERMINAL ILLNESS.

Beneficiary Assist provides you, your eligible beneficiaries and immediate family members with unlimited 24/7 phone access to help related to the death of yourself or a loved one. That includes:

- Legal advice, financial planning and emotional counseling for up to one year from the date the claim is filed.

- Up to five face-to-face sessions or equivalent professional time for one service or a combination.

HANDLING A SPECTRUM OF NEEDS WITH COMPASSION AND EXPERTISE.

Because Beneficiary Assist covers a spectrum of concerns, you and your beneficiaries will have a convenient, single source for the following needs. Emotional or grief counseling. ComPsych GuidanceExpertsSM are master's and doctoral level clinicians who'll listen to your concerns with compassion and refer you to the right resources for:

- Grief and loss.
- Stress, anxiety and depression.
- Relationship/marital conflict.
- Problems with children.
- Job pressures.
- Substance abuse.

continued





CASE ILLUSTRATION: SOLID FOOTING.²

Greg's sudden death at the age of 42 came as an enormous blow to his wife, Sharon. Besides the shock and grief, Sharon had to struggle with debt and claims to Greg's estate by children from a former marriage. She went back and forth between anger and depression.

Through Beneficiary Assist, she was able to link up with counselors who listened compassionately and referred her to a grief expert. She also used the legal and financial counseling resources to get solid answers to complex questions.

FINANCIAL INFORMATION AND RESOURCES.

With loss often come tough financial decisions. Share your concerns with certified public accountants and certified financial planners for assistance with:

- Managing a budget.
- Estate closure.
- Retirement impacts.
- Tax questions.
- Getting out of debt.

LEGAL SUPPORT AND RESOURCES.

When legal uncertainties arise, get the help you need. Attorneys are available for private consultations for the following:

- Estate and probate.
- Debt and bankruptcy.
- Real estate transactions.
- Family law.

If additional legal representation is needed beyond the face-to-face visits, you can be referred to a qualified attorney in your area. You may qualify for a 25 percent reduction in the attorney's customary fees by using the ComPsych Network.

REACH OUT.

Find out more about Beneficiary Assist counseling services by calling **1-800-411-7239**. It's a service you'll be glad to have when you need it.

Prepare. Protect. Prevail.®

Visit us at THEHARTFORD.COM/EMPLOYEEBENEFITS



The Hartford® is The Hartford Financial Services Group, Inc. and its subsidiaries including issuing companies Hartford Life Insurance Company and Hartford Life and Accident Insurance Company. Home office is Hartford, CT.

¹ Beneficiary Assist™ is offered through The Hartford by ComPsych™. ComPsych is not affiliated with The Hartford and is not a provider of insurance services. The Hartford is not responsible and assumes no liability for the goods and services provided by ComPsych and reserves the right to discontinue any of these services at any time.

² This case illustration is fictitious and for illustrative purposes only.

4211 06/15 Printed in the U.S.A. © 2015 The Hartford Financial Services Group, Inc. All rights reserved.



ABILITY ASSIST® COUNSELING SERVICES

For employees covered under The Hartford's Disability insurance, Critical Illness insurance or Leave Management Services.

GETTING SUPPORT SHOULD BE EASY.

Life presents complex challenges. If the unexpected happens, you want to know that you and your family have simple solutions to help you cope with the stress and life changes that may result. That's why the Hartford's Ability Assist Counseling Services, offered by ComPsych®,¹ can play such an important role. Our straightforward

approach takes the complexity out of benefits when life throws you a curve.

COMPASSIONATE SOLUTIONS FOR COMMON CHALLENGES.

From the everyday issues like job pressures, relationships, retirement planning or personal impact of grief, loss, or a disability, Ability Assist can be your resource for professional support.

You and your family, including spouse and dependents, can access Ability Assist, at any time, as long as you are covered under The Hartford's **Disability insurance, Critical Illness insurance or Leave Management Services.**

ABILITY ASSIST COUNSELING SERVICES

Emotional or Work-Life Counseling

Helps address stress, relationship or other personal issues you or your family members may face. It's staffed by GuidanceExpertsSM - highly trained master's and doctoral level clinicians - who listen to concerns and quickly make referrals to in-person counseling or other valuable resources. Situations may include:

- Job pressures.
- Relationship/marital conflicts.
- Stress, anxiety and depression.
- Work/school disagreements.
- Substance abuse.
- Child and elder care referral services.

Financial Information and Resources

Provides support for the complicated financial decisions you or your family members may face. Speak by phone with a Certified Public Accountant and Certified Financial PlannerTM Professionals on a wide range of financial issues. Topics may include:

- Managing a budget.
- Retirement.
- Getting out of debt.
- Tax questions.
- Saving for college.

continued



ABILITY ASSIST COUNSELING SERVICES *con't.*

Legal Support and Resources

Offers assistance if legal uncertainties arise. Talk to an attorney by phone about the issues that are important to you or your family members. If you require representation, you'll be referred to a qualified attorney in your area with a 25% reduction in customary legal fees thereafter. Topics may include:

- Debt and bankruptcy.
- Guardianship.
- Buying a home.
- Power of attorney.
- Divorce.

Health ChampionSM

A service that supports you through all aspects of your health care issues by helping to ensure that you're fully supported with employee assistance programs and/or work-life services. HealthChampion is staffed by both administrative and clinical experts who understand the nuances of any given health care concern. Situations may include:

- One-on-one review of your health concerns
- Preparation for upcoming doctor's visits/lab work/tests/surgeries
- Answers regarding diagnosis and treatment options
- Coordination with appropriate health care plan provider(s)
- An easy-to-understand explanation of your benefits-what's covered and what's not
- Cost estimation for covered/non-covered treatment
- Guidance on claims and billing issues
- Fee/payment plan negotiation

A CASE IN POINT.³

"The initial counselor I spoke with was so comforting and easy to communicate with. She put me right at ease and empowered me to follow through with the program. She was wonderful."

- Hartford Customer, Ability Assist User

Online: The point is simplicity.

You'll also have 24/7 access to GuidanceResources® Online (offered by ComPsych).¹ This resource provides trusted information, resources, referrals and answers to everyday questions right from your desktop or the privacy of your home. It includes:

- Chat sessions with professional moderators.
- Access to hundreds of personal health topics and resources for child care, elder care, attorneys or financial planners.

SERVICE FEATURES.

The service includes up to three face-to-face emotional or work-life counseling sessions per occurrence per year. This means you and your family members won't have to share visits. Each individual can get counseling help for his/her own unique needs. Legal and financial counseling are also available by telephone during business hours. HealthChampionSM offers unlimited access to services.²

GETTING IN TOUCH IS EASY.

On the phone: Just one simple call.

For access over the phone, simply call toll-free **1-800-96-HELPS (1-800-964-3577).**

Visit **WWW.GUIDANCERESOURCES.COM** to create your own personal username and password. If you're a first-time user, you'll be asked to provide the following information on the profile page:

1. In the **Company/Organization** field, use: **HLF902**
2. Then, create your own confidential user name and password.
3. Finally, in the Company Name field at the bottom of personalization page, use: **ABILI**

Prepare. Protect. Prevail.®

Visit us at **THEHARTFORD.COM/EMPLOYEEBENEFITS**



The Hartford® is The Hartford Financial Services Group, Inc. and its subsidiaries including issuing companies Hartford Life Insurance Company and Hartford Life and Accident Insurance Company. Home Office is Hartford, CT.

¹ Ability Assist®, The GuidanceResources® Program, and HealthChampionSM services are offered through The Hartford by ComPsych®, ComPsych is not affiliated with The Hartford and is not a provider of insurance services. The Hartford is not responsible and assumes no liability for the goods and services provided by ComPsych. ComPsych and GuidanceResources are registered trademarks and HealthChampion is a service mark of ComPsych Corporation.

² HealthChampionSM specialists are only available during business hours. Inquiries outside of this time frame can either request a call-back the next day or schedule an appointment.

³ This case illustration is fictitious and for illustrative purposes only.